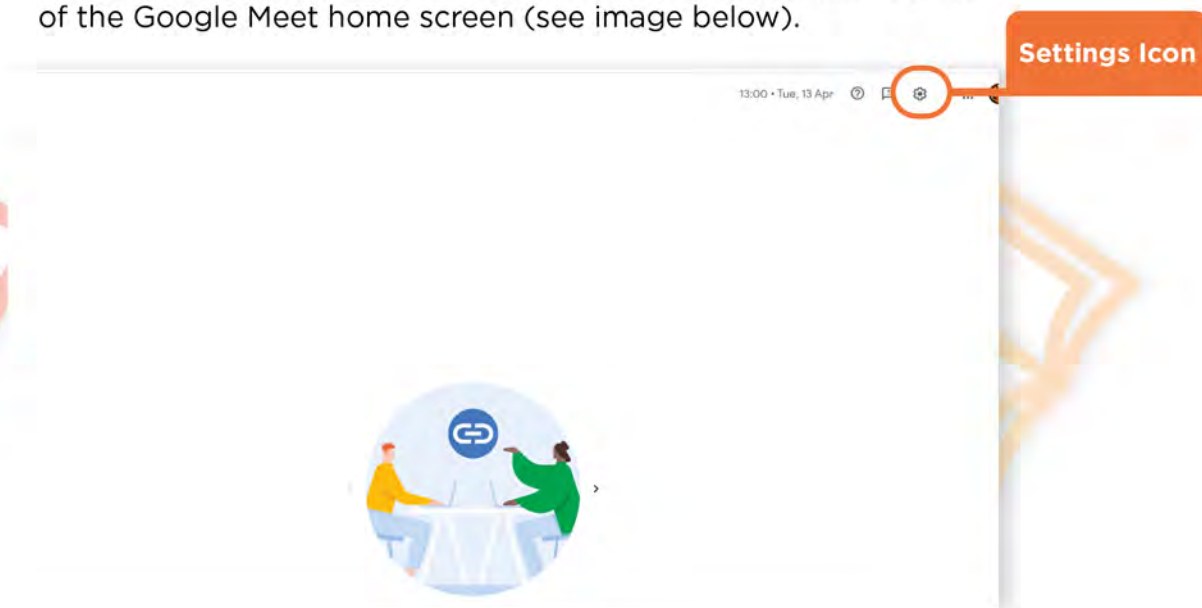


## Setting up your HUE camera

### Step 1

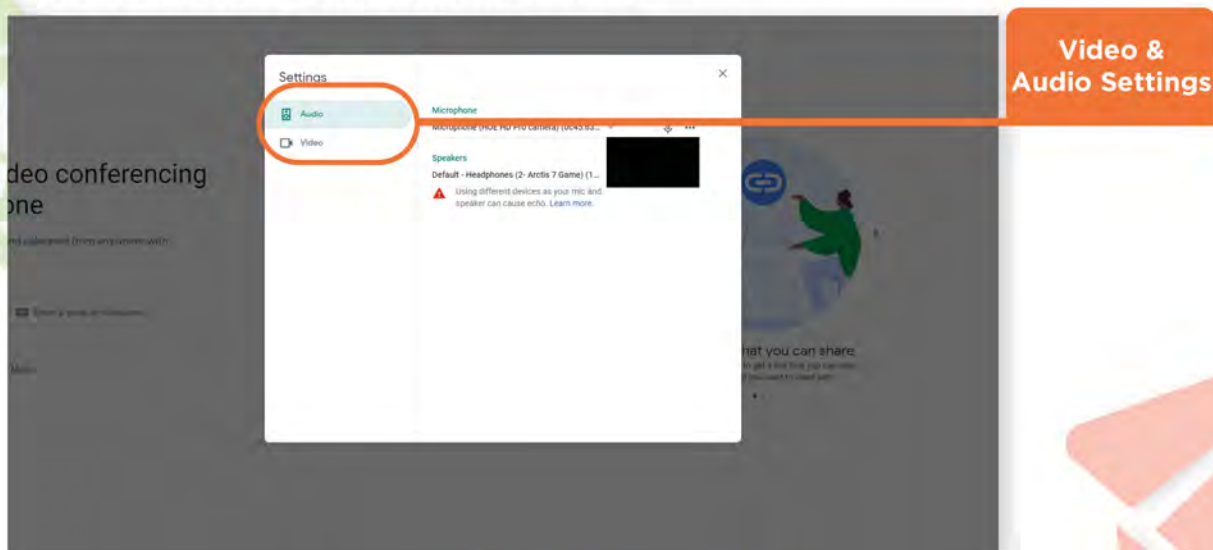
With your HUE camera connected to your computer, please open the Google Meet page and sign in to your account.

Click on the Settings icon located near the top right-hand corner of the Google Meet home screen (see image below).



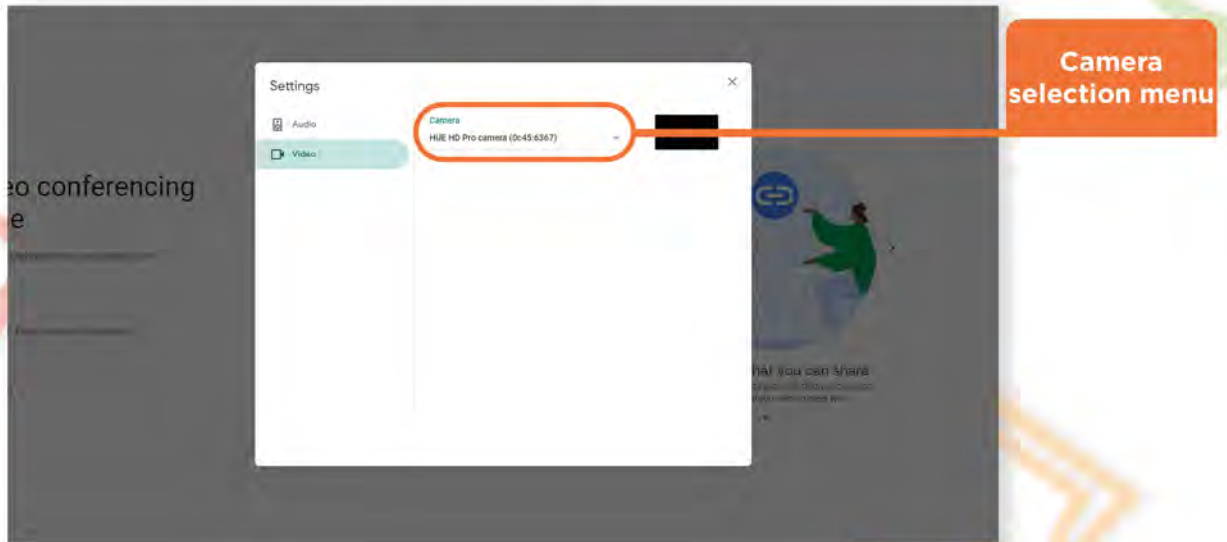
### Step 2

A Settings page will pop up. Click on either the **Video**, or **Audio** tabs to reveal the corresponding settings.



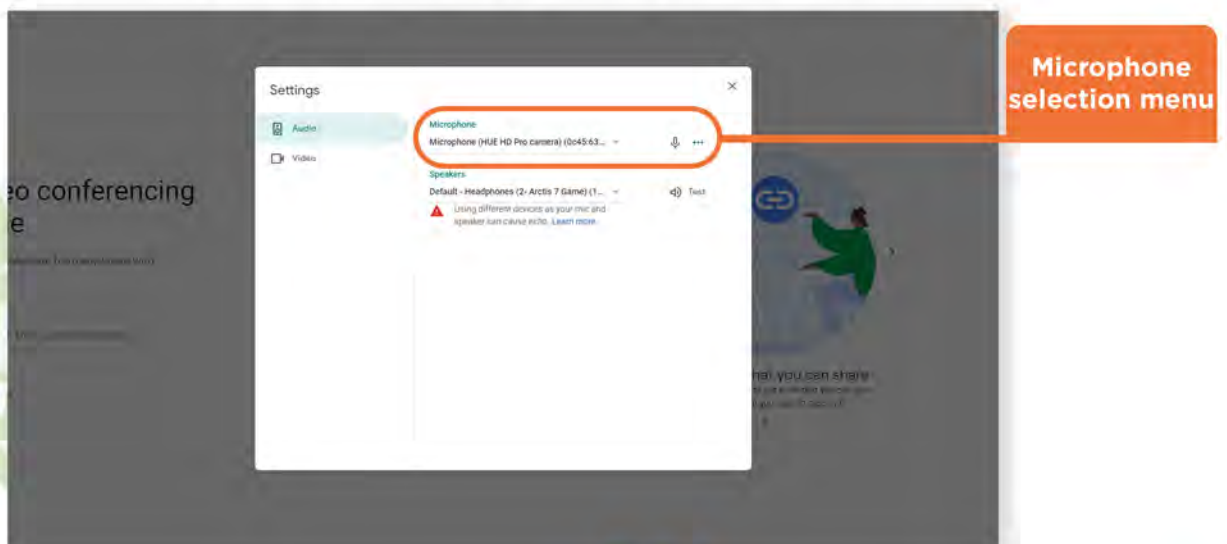
### Step 3

**Video Settings:** On the Video settings page, there is a drop-down menu to the left of the video preview box. Click this menu to reveal a list of cameras available to use. Select your **HUE** camera from the list to use your HUE. You should now see a video preview of what your HUE camera is viewing.



### Step 4

**Audio Settings:** On the Audio settings page, click on the drop-down menu below 'Microphone', to select your HUE microphone.



You can now use your HUE camera as a capture device on Google Meet. Use the **Join or Start Meeting** button on the Google Meet home page to join or start a call.

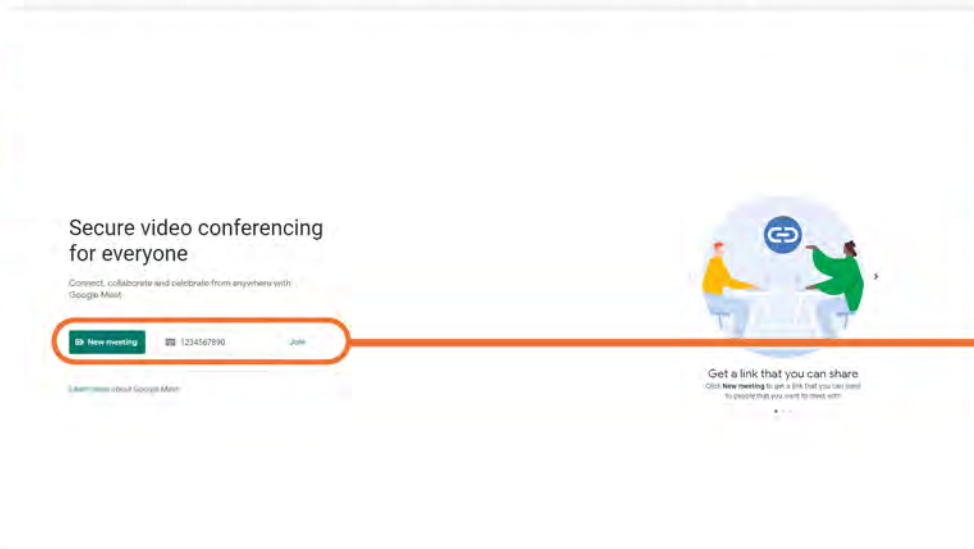
# Using HUE Intuition with Google Meet

If you want to share your HUE Intuition screen through Google Meet rather than connecting directly to the camera, these instructions will help you get started.

## Step 1

Launch **HUE Intuition** and select your HUE camera using the drop-down menu located near the bottom right.

Open the [Google Meet](#) page and start or join a meeting but do not enable your video (if your HUE is selected automatically, turn it off by clicking on the Video icon on the next page).



New Meeting & Join buttons

After clicking on the **Join or Start Meeting** button, a pop-up window will appear where you can set a code for your meeting, or input an existing meeting code to join.



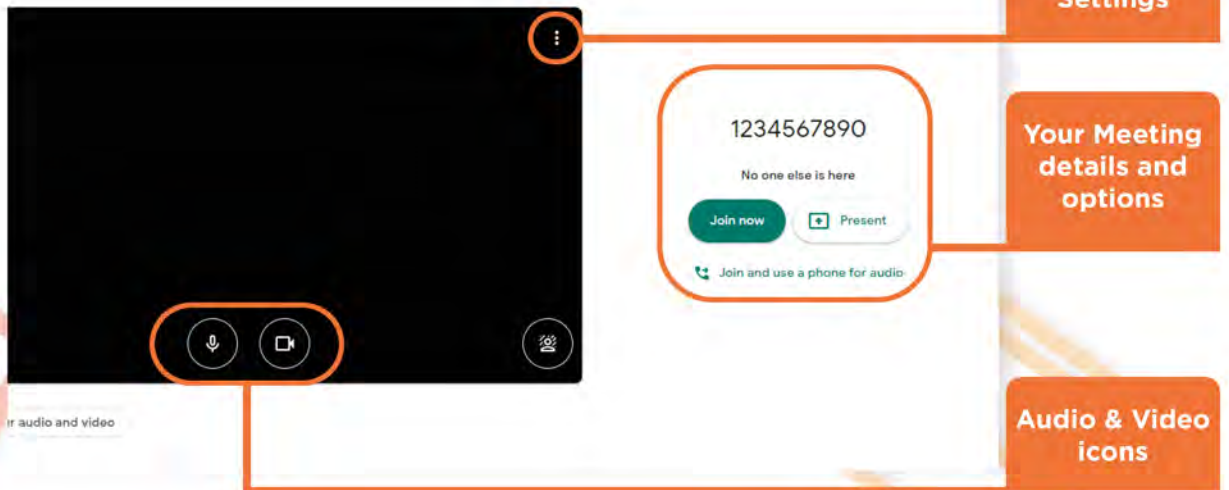
New Meeting Menu



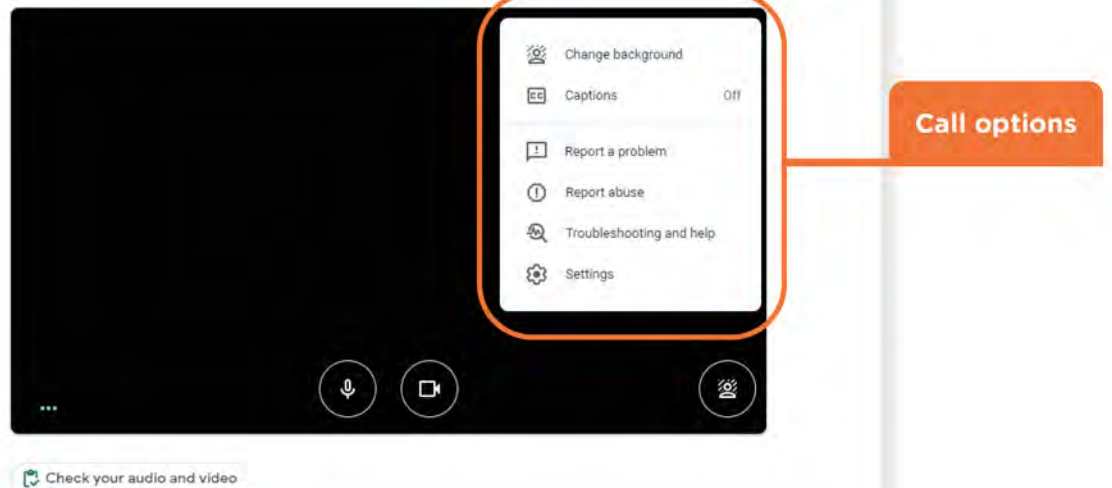
## Step 2

After setting up your call code you will be taken to a new page, where you can confirm your call settings once more.

Use the Audio and Video icons to enable/disable your microphone and camera.



Use the three vertically stacked dots to access the call options.



**Tip**

The **Present** button, located next to the **Join now** button, lets you jump straight to the share screen options.

Use this option if you want to go straight to the HUE Intuition screen without using a face cam to greet the meeting participants first.

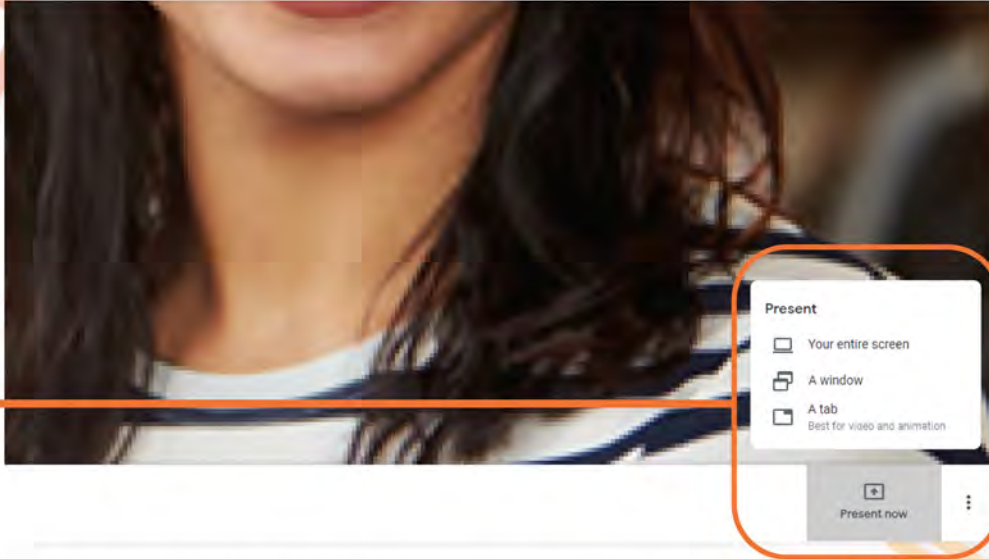
### Step 3

Once you are on the call, click on the **Present Now** button located on the bottom menu bar, then click on 'A Window'.

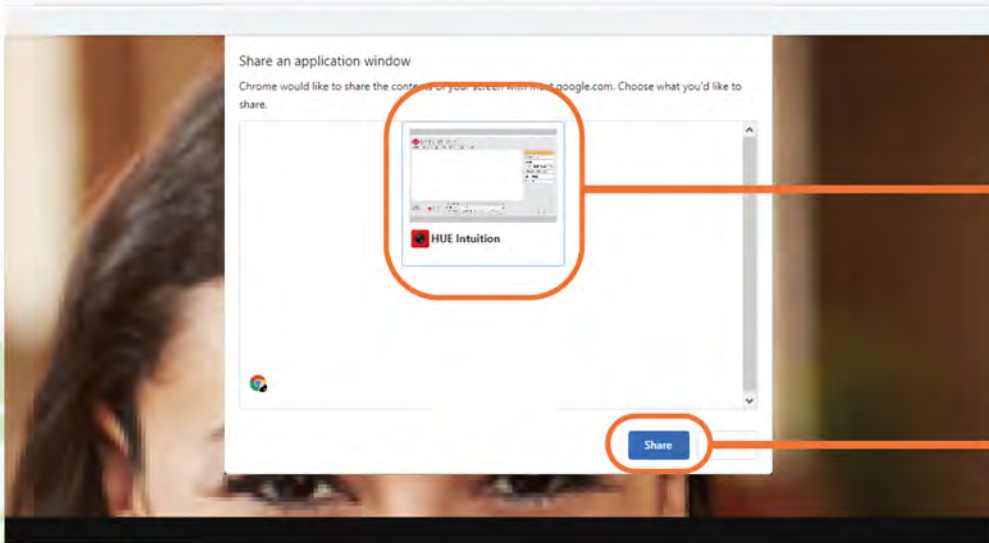
Google Meet will reveal a list of open applications on a window at the top of the page.



Present Now  
button



Click on the HUE Intuition application window, then click the **Share** button, to share it with Google Meet.



HUE Intuition  
window

Share button

**Optional step:** Using the **HUE Camera Viewer** browser app as an alternative to HUE Intuition.

You may also find our **HUE Camera Viewer** tool for the Chrome browser a useful alternative to **HUE Intuition** as there is minimal setup required.

With your HUE camera successfully connected to the web tool, select '**A Chrome tab**' after clicking the Present Now option.

You will be shown a list of open chrome browser tabs, select the HUE Camera Viewer tab (apps.huehd.com).



#### Step 4

After clicking the Share button, the HUE Intuition window will appear, allowing you to continue using HUE Intuition in your meeting.



Tip

If you have a **built-in camera** on your computer you could assign this to **Google Meet** so that the people in the call participants can also see you, while you are demonstrating with HUE Intuition.